

BOX SCORE: *** FINAL ***

Date: 03-25-88 Site: State Tourney, Frankfort

Attendance: 3,475

Team: Clay County

NO.	NAME	TOTAL FG		3-POINT		FT	FTA	REB			PF	TP	A	TO	BLK	S	MIN
		FG	FGA	FG	FGA			O	D	T							
24	Carpenter, Ruth	0	4	0	0	0	0	1	3	4	1	0	1	0	0	23	
40	Messer, Michelle	1	7	0	0	0	1	1	1	2	4	2	0	1	1	30	
54	Grant, Gretchen	4	8	0	0	5	6	1	2	3	2	13	0	1	1	31	
22	Feltner, Susan	2	9	1	5	1	4	1	1	2	1	6	0	0	3	31	
32	Jones, Kim	9	17	1	4	2	3	1	5	6	3	21	3	1	2	32	
42	Curry, Tina	2	3	2	3	0	0	0	0	0	3	6	1	0	0	12	
20	Ponder, Katrina	0	1	0	1	0	0	0	0	0	0	0	0	0	0	1	
TEAM								4	1	5							
TOTALS		18	49	4	13	8	14	9	13	22	14	48	5	3	0	7	160

Percentages:

Game	FG	3-PT.	Deadball	Rebounds	FT
1	7/12 58.3%	0/0 0.0%	4/13 30.8%	0/0 0.0%	1/4 25.0%
2	0/11 0.0%	0/5 0.0%	0/5 0.0%	4/4 100.0%	4/4 100.0%
3	4/11 36.4%	1/2 50.0%	1/2 50.0%	3/4 75.0%	3/4 75.0%
4	7/15 46.7%	3/6 50.0%	3/6 50.0%	0/2 0.0%	0/2 0.0%

Team: Oldham County

NO.	NAME	TOTAL FG		3-POINT		FT	FTA	REB			PF	TP	A	TO	BLK	S	MIN
		FG	FGA	FG	FGA			O	D	T							
41	Harned, Terri	8	11	0	0	5	7	2	7	9	3	21	6	5	0	0	32
44	Godman, Liz	7	10	0	0	2	2	0	7	7	2	16	1	0	0	0	29
45	Edwards, Heather	2	5	0	0	0	0	1	3	4	4	4	0	0	0	0	15
11	Prather, Charla	3	4	0	0	4	4	0	5	5	1	10	0	4	1	1	29
31	Francis, Tina	0	2	0	0	0	0	1	2	3	0	0	6	2	0	0	26
03	Lewis, Diane	0	1	0	0	0	0	0	1	1	2	0	3	0	0	0	20
33	O'Bryan, Jenny	0	3	0	0	5	6	0	1	1	0	5	2	0	0	0	9
TEAM								1	1	1							
TOTALS		20	36	0	0	15	19	4	27	31	12	56	18	11	1	1	160

Percentages:

Game	FG	3-PT.	Deadball	Rebounds	FT
1	5/10 50.0%	0/0 0.0%	0/0 0.0%	0/0 0.0%	2/2 100.0%
2	5/12 41.7%	0/0 0.0%	0/0 0.0%	0/0 0.0%	0/0 0.0%
3	5/9 55.6%	0/0 0.0%	0/0 0.0%	3/5 60.0%	3/5 60.0%
4	4/5 80.0%	0/0 0.0%	0/0 0.0%	11/12 91.7%	11/12 91.7%

OFFICIALS: Wayne Divine, Lois Holmes, Alt-D. Hatfield

Technical: None

SCORE BY PERIODS

Clay County	15	4	12	17	= 48
Oldham County	14	10	13	19	= 56

Produced by the K.H.S.A.A. Stat Crew with FINAL III™

Clay County "Tigerettes" vs Oldham County "Lady Colonels"
2nd Half Play by Play

PAGE : 2

Tip off at 7:30 p.m. on 03/25/88 at State Tourney, Frankfort
Produced by the K.H.S.A.A. Stat Crew with FINAL III™

Player	Team	Oldham County	Time	Score	Clay County	Player	Team
Lewis, Diane, Prather, Charla		Godman, Liz, Edwards, Heather, Harned, Terri			Carpenter, Ruth, Messer, Michelle, Grant, Gretchen, Feltner, Susan, Jones, Kim		
		Ball to Lady Colonels					
6-8	75.0%	17-32 53.1%	4 8:00	*39-31			
5		15					
3		3	4 7:27				
2-5	40.0%	18-33 54.5%	4 7:10	*41-31			
6		16					
7-9	77.7%	19-34 55.8%	4 7:00	41-33* 7 ft Left Side Driving by Jones, Kim	7-12	58.3%	12-36 33.3%
3		17	4 6:47	*43-33			
4		4					
		4 ft Lane Bank by Godman, Liz					
		Assist by Lewis, Diane					
		Foul on Edwards, Heather	4 5:59				
		Sub In: Francis, Tina Out: Edwards, Heather	4 5:59				
1		5	4 5:59	43-35* 6 ft Lane Bank by Grant, Gretchen	4-8	50.0%	13-38 34.2%
		Foul on Prather, Charla	4 5:38				
		REB: 25 A: 17 BLK: 0 TO: 8 PF: 5	4 5:38				
		S: 1 FT: 5-7 71.4% FG: 19-35 54.2%	No. 1 Oldham County	TIME - OUT			
			4 5:38	Messer, Michelle, 1 & Bonus missed 1st	0-1	00.0%	8-13 61.5%
			4 3:13	43-37* Layup Off Fast Break by Feltner, Susan	1-8	12.5%	14-40 35.0%
			4 2:48				
			No. 2 Oldham County	TIME - OUT			
			4 2:48	REB: 19 A: 3 BLK: 0 TO: 3 PF: 5			
				S: 7 FT: 8-13 61.5% FG: 14-40 35.0%			
			4 2:48	Sub In: Ponder, Katrina Out: Grant, Gretchen			
			4 2:42	Foul on Jones, Kim	2		6
2-2	100%	7-9 77.7%	4 2:42	*45-37			
2		6	4 2:34				
		Prather, Charla, 1 & Bonus made both	4 2:34				
		Foul on Lewis, Diane	4 2:34				
		Sub In: O'Bryan, Jenny Out: Lewis, Diane	4 2:34				
			4 2:17	Jones, Kim, 1 & Bonus missed 1st	2-3	66.6%	8-14 57.1%
			4 2:17	Sub In: Grant, Gretchen Out: Ponder, Katrina			
			4 2:17	Sub In: Curry, Tina Out: Carpenter, Ruth			
			4 2:17	3 pt 22 ft Right Angle Jump shot by Feltner, Susan	2-9	22.2%	15-41 36.5%
			4 1:44	Assist by Curry, Tina			
			4 1:44	Foul on Jones, Kim	3		7
1-2	50.0%	8-11 72.7%	4 1:33	45-42* 4 ft Lane Follow by Jones, Kim	8-14	57.1%	16-43 37.2%
		O'Bryan, Jenny, 1 & Bonus made 1st missed 2nd	4 1:10	Foul on Messer, Michelle	4		8
			4 1:10	*48-42			
3-4	75.0%	10-13 76.9%	4 0:57	Foul on Feltner, Susan	1		9
			4 0:56				
			Clay County No. 2	TIME - OUT			
			4 0:56	REB: 21 A: 4 BLK: 0 TO: 3 PF: 9			
				S: 7 FT: 8-14 57.1% FG: 16-44 36.3%			
4-4	100%	12-15 80.0%	4 0:50	*50-42	2-2	100%	17-45 37.7%
		Prather, Charla, 1 & Bonus made both	4 0:50	3 pt 22 ft Left Side Jump shot by Curry, Tina	3		5
			4 0:43	Assist by Jones, Kim	2		10
			4 0:43	Foul on Curry, Tina			
			4 0:43	Sub In: Carpenter, Ruth Out: Grant, Gretchen			
5-6	83.3%	14-17 82.3%	4 0:43	*52-45			
		O'Bryan, Jenny, 1 & Bonus made both	4 0:28	Foul on Curry, Tina	3		11
5-7	71.4%	16-19 84.2%	4 0:28	*54-45			
		Harned, Terri, 1 & Bonus made both	4 0:20	54-48* 3 pt 22 ft Straight Away Jump shot by Jones, Kim	9-16	56.2%	18-47 38.2%
			4 0:18				
			Clay County No. 3	TIME - OUT			
			4 0:18	REB: 21 A: 5 BLK: 0 TO: 3 PF: 11			
				S: 7 FT: 8-14 57.1% FG: 18-47 38.2%			
			4 0:18	Sub In: Ponder, Katrina Out: Curry, Tina			
8-11	72.7%	20-36 55.5%	4 0:18	*56-48			
		Layup Off Fast Break by Harned, Terri					

Clay County "Tigerettes" vs Oldham County "Lady Colonels"
2nd Half Play by Play

Tip off at 7:30 p.m. on 03/25/88 at State Tourney, Frankfort
Produced by the K.H.S.A.A. Stat Crew with FINAL III™

PAGE : 1

Player	Team	Oldham County
Prather, Charla, Francis,	Tina, Harned, Terri, Godman, Liz, Lewis, Diane	Ball to Lady Colonels
3-4 75.0%	12-23 52.1%	13 ft Lane Jump shot by Prather, Charla
3	11	Assist by Harned, Terri
2	1	Foul on Harned, Terri
6-8 75.0%	13-25 52.0%	6 ft Left Side Bank by Harned, Terri
2	12	Assist by Lewis, Diane
7-9 77.7%	14-26 53.8%	Layup Off Fast Break by Harned, Terri
5	13	Assist by Francis, Tina
1-1 100%	3-3 100%	Harned, Terri, 1 Free Throw made
4-5 80.0%	15-28 53.5%	10 ft Right Base Line Turnaround by Godman, Liz

Time	Score	Clay County	Player	Team
		Feltner, Susan, Carpenter, Ruth, Jones, Kim, Messer, Michelle, Grant, Gretchen		
3 7:37	*26-19			
3 7:01				
3 7:01	26-20*	Feltner, Susan, 2 Free Throws made 1st missed 2nd	1-4	25.0% 6-10 60.0%
3 6:30		Foul on Messer, Michelle	2	1
3 5:57	26-22*	8 ft Left Base Line Driving by Jones, Kim	6-10	60.0% 8-26 30.7%
3 4:59	26-24*	4 ft Lane Turnaround by Grant, Gretchen	3-6	50.0% 9-27 33.3%
		Assist by Jones, Kim	2	2
3 4:34	*28-24			
3 4:13	*30-24			
3 4:13		Foul on Carpenter, Ruth	1	2
3 4:13		Sub In: Curry, Tina Out: Carpenter, Ruth		
3 4:12	*31-24			
3 3:10	*33-24			

REB: 22 A: 13 BLK: 0 TD: 6 PF: 1
S: 0 FT: 3-3 100% FG: 15-28 53.5%

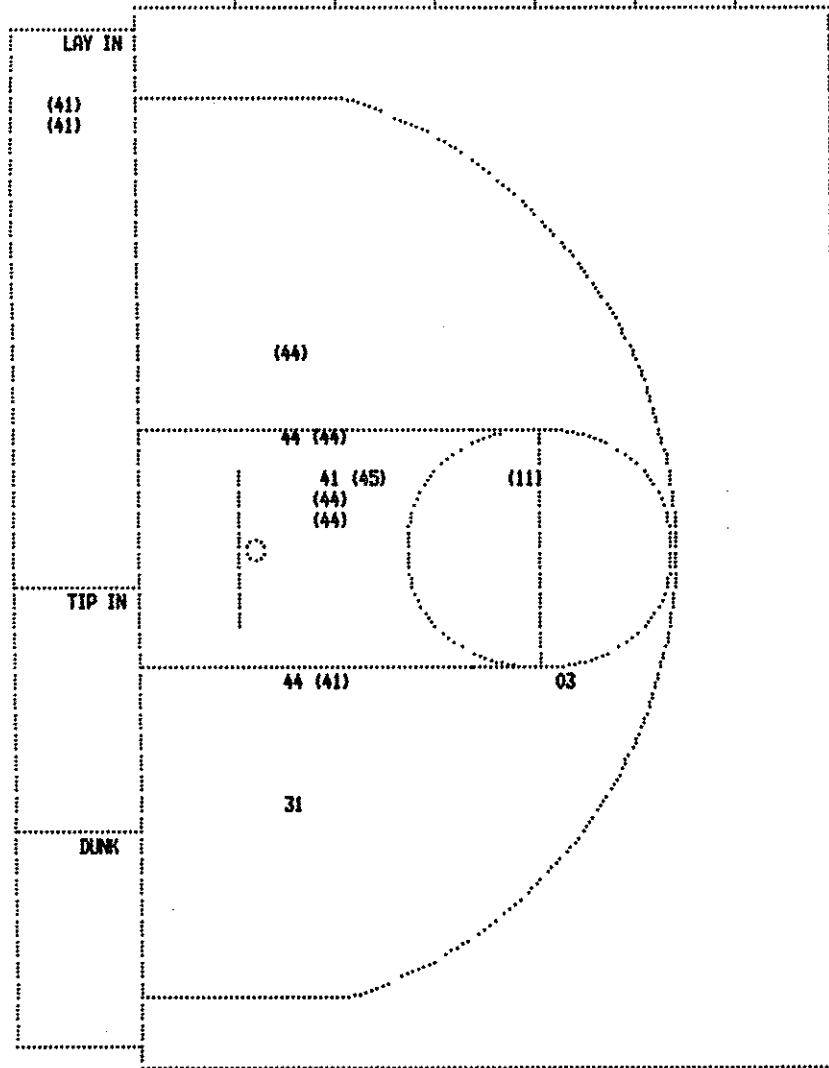
T I M E - O U T Clay County No. 1

REB: 15 A: 2 BLK: 0 TD: 2 PF: 2
S: 5 FT: 6-10 60.0% FG: 9-31 29.0%

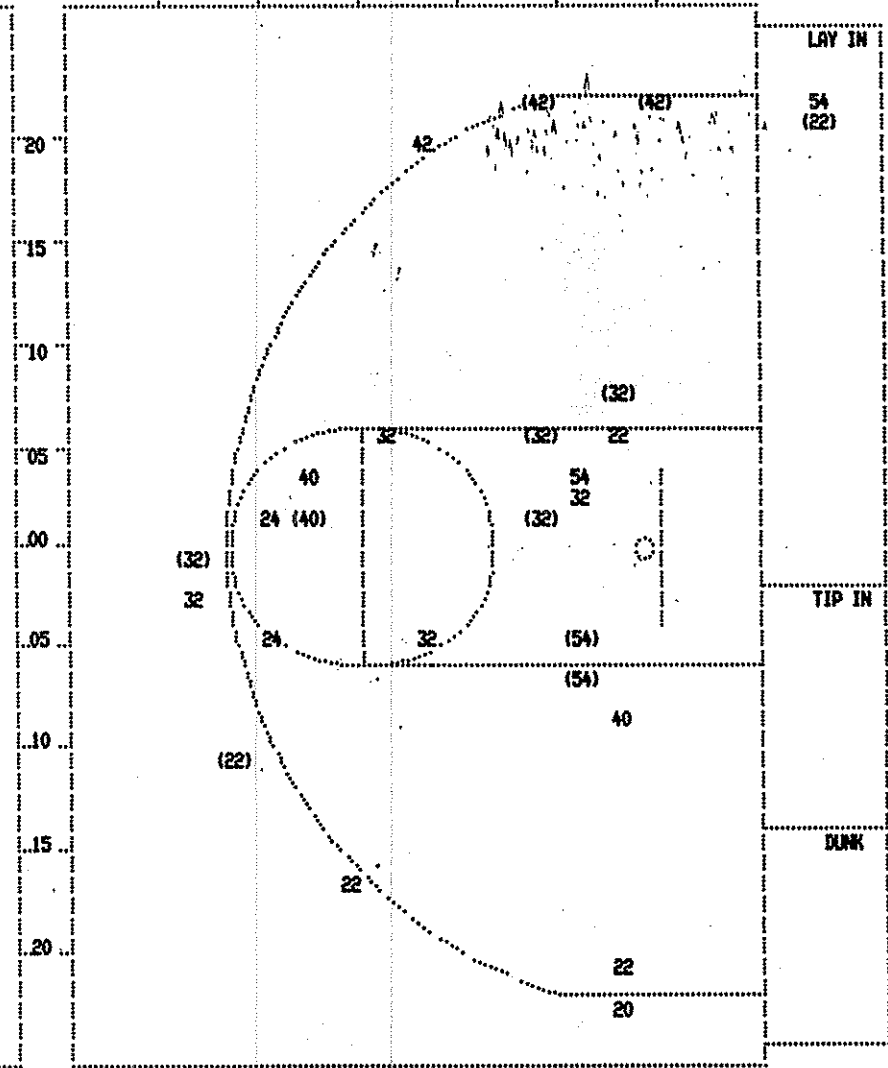
2-3 66.6%	4-5 80.0%	Harned, Terri, 2 Free Throws made 1st missed 2nd
5-6 83.3%	16-30 53.3%	6 ft Lane Turnaround by Godman, Liz
4	14	Assist by Harned, Terri
1	2	Foul on Lewis, Diane
3-5 60.0%	5-7 71.4%	Harned, Terri, 2 Free Throws missed 1st made 2nd

3 2:52	33-27*	3 pt 22 ft Left Base Line Jump shot by Curry, Tina	1-1	100% 10-32 31.2%
3 2:27		Foul on Grant, Gretchen	2	3
3 2:27	*34-27			
3 2:27	34-29*	16 ft Circle Jump shot by Messer, Michelle	1-5	20.0% 11-33 33.3%
3 1:45	*36-29			
3 1:11				
3 1:11	36-31*	Jones, Kim, 2 Free Throws made both	2-2	100% 8-12 66.6%
3 1:03		Foul on Messer, Michelle	3	4
3 1:03		Sub In: Carpenter, Ruth Out: Messer, Michelle		
3 0:05		Foul on Curry, Tina	1	5
3 0:05	*37-31			

SECOND HALF SHOT CHART Produced by the K.H.S.A.A. Stat Crew with FINAL III™



Oldham County				Player			
Player				Player			
41 - Harned, Te	3 / 4	75.0%		03 - Lewis, Dia	0 / 1	0.0%	
44 - Godwan, Li	4 / 6	66.6%					
45 - Edwards, He	1 / 1	100.0%					
11 - Prather, C	1 / 1	100.0%					
31 - Francis, T	0 / 1	0.0%					
Layups	1-9 Ft	10-15 Ft	Over 15 Ft	3 Pointers	Total		
2 / 2	5 / 8	2 / 4			9 / 14		
100.0%	62.5%	50.0%			64.3%		



Clay County				Player			
Player				Player			
24 - Carpenter,	0 / 2	0.0%		20 - Ponder, Ka	0 / 1	0.0%	
40 - Messer, Mic	1 / 3	33.3%		42 - Curry, Tin	2 / 3	66.6%	
54 - Grant, Gre	2 / 4	50.0%					
22 - Feltner, S	2 / 5	40.0%					
32 - Jones, Kim	4 / 8	50.0%					
Layups	1-9 Ft	10-15 Ft	Over 15 Ft	3 Pointers	Total		
1 / 2	5 / 9	0 / 2			11 / 26		
50.0%	55.6%	0.0%			20.0%	50.0%	42.3%

BOX SCORE: * OFFICIAL FIRST HALF * Date: 03-25-88 Site: State Tourney, Frankfort Attendance: 3,475

Team: Clay County

NO.	NAME	TOTAL FG		3-POINT		FT	FTA	REB			PF	TP	A	TD	BLK	S	MIN
		FG	FGA	FG	FGA			O	D	T							
24	Carpenter, Ruth	0	2	0	0	0	0	0	1	1	0	0	0	0	0	11	
40	Messer, Michelle	0	4	0	0	0	0	1	1	2	1	0	1	0	0	16	
54	Grant, Gretchen	2	4	0	0	5	6	1	1	2	1	9	0	1	0	16	
22	Feltner, Susan	0	4	0	3	0	2	0	1	1	0	0	0	0	2	15	
32	Jones, Kim	5	9	0	2	0	0	0	2	2	1	10	1	0	1	16	
42	Curry, Tina	0	0	0	0	0	0	0	0	0	0	0	0	0	0	6	
TEAM								1	1	2							
TOTALS		7	23	0	5	5	8	3	7	10	3	19	1	2	0	4	80

Percentages: HALF----- FG 7/ 23 30.4% 3-PT. 0/ 5 0.0% FT 5/ 8 62.5%
 Period 1 7/ 12 58.3% 0/ 0 0.0% 1/ 4 25.0%
 Period 2 0/ 11 0.0% 0/ 5 0.0% 4/ 4 100.0%

Team: Oldham County

NO.	NAME	TOTAL FG		3-POINT		FT	FTA	REB			PF	TP	A	TD	BLK	S	MIN
		FG	FGA	FG	FGA			O	D	T							
41	Harned, Terri	5	7	0	0	0	0	1	2	3	1	10	2	3	0	0	16
44	Godman, Liz	3	4	0	0	2	2	0	4	4	2	8	1	0	0	0	13
45	Edwards, Heather	1	4	0	0	0	0	1	3	4	3	2	0	0	0	0	13
11	Prather, Charla	2	3	0	0	0	0	0	3	3	0	4	0	1	0	0	13
31	Francis, Tina	0	1	0	0	0	0	1	1	2	0	0	4	1	0	0	12
03	Lewis, Diane	0	0	0	0	0	0	0	1	1	0	0	1	0	0	0	6
33	O'Bryan, Jenny	0	3	0	0	0	0	0	1	1	0	0	2	0	0	0	7
TEAM																	
TOTALS		11	22	0	0	2	2	3	15	18	6	24	10	5	0	0	80

Percentages: HALF----- FG 11/ 22 50.0% 3-PT. 0/ 0 0.0% FT 2/ 2 100.0%
 Period 1 6/ 10 60.0% 0/ 0 0.0% 2/ 2 100.0%
 Period 2 5/ 12 41.7% 0/ 0 0.0% 0/ 0 0.0%

OFFICIALS: Wayne Divine, Lois Holmes, Alt-D. Hatfield SCORE BY PERIODS
 Technicals: None Clay County 15 4 = 19
 Oldham County 14 10 = 24

Produced by the K.H.S.A.A. Stat Crew with FINAL III**

Clay County "Tigerettes" vs Oldham County "Lady Colonels"
1st Half Play by Play

Tip off at 7:30 p.m. on 03/25/88 at State Tourney, Frankfort
Produced by the K.H.S.A.A. Stat Crew with FINAL III**

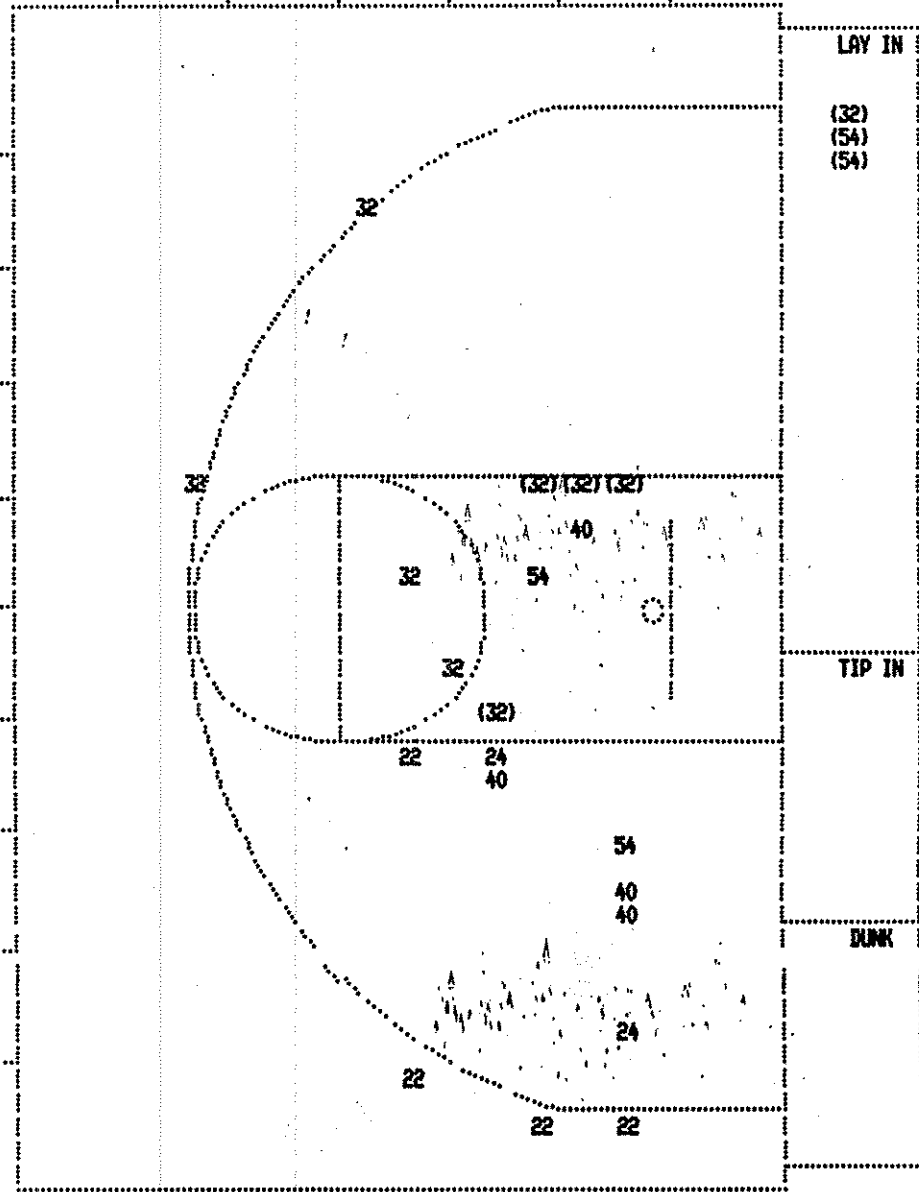
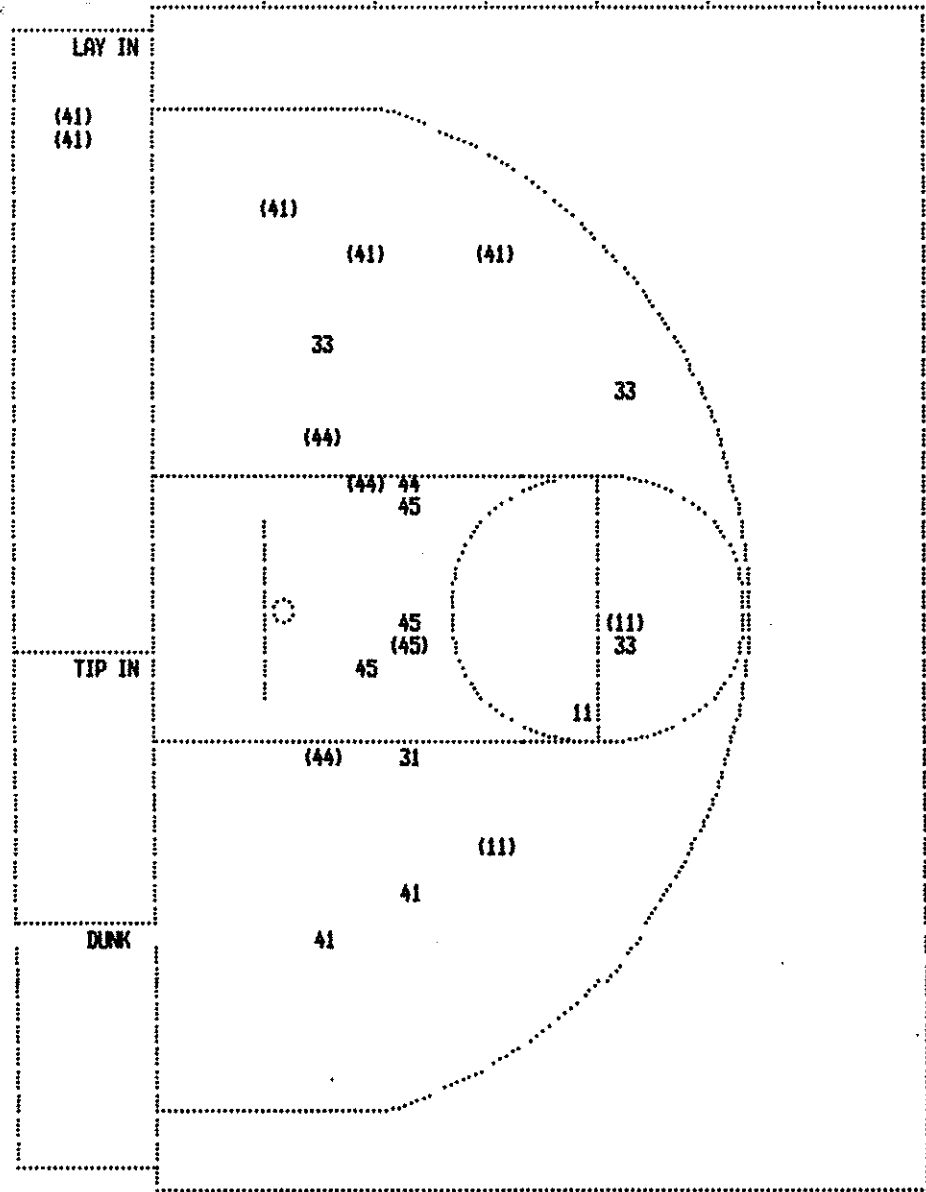
Player	Team	Oldham County	Time	Score	Clay County	Player	Team
Prather, Charla, Harned, Terri, O'Bryan, Jenny, Godman, Liz, Edwards, Heather					Feltner, Susan, Grant, Gretchen, Messer, Michelle, Jones, Kim, Carpenter, Ruth Ball to Tigerettes		
4-5	80.0%	7-12 58.3%	Follow Layup by Harned, Terri		2 7:19	*16-15	
1-1	100%	8-13 61.5%	14 ft Lane Jump shot by Prather, Charla		2 6:49	*18-15	
1		7	Assist by Godman, Liz		2 6:11		
					2 6:11		
2		4	Foul on Edwards, Heather		2 5:48		
			Sub In: Francis, Tina Out: Edwards, Heather		2 5:48		
5-6	83.3%	9-16 56.2%	Driving Layup by Harned, Terri		2 4:55	*20-15	
3		8	Assist by Francis, Tina				
REB: 12 A: 8 BLK: 0 TO: 3 PF: 4 S: 0 FT: 2-2 100% FG: 9-16 56.2%					REB: 7 A: 1 BLK: 0 TO: 1 PF: 2 S: 3 FT: 1-4 25.0% FG: 7-17 41.1%		
T I M E - O U T Clay County No. 1							
2-2	100%	10-18 55.5%	13 ft Left Side Jump shot by Prather, Charla		2 4:45		
2		9	Assist by O'Bryan, Jenny		2 4:25		
2		5	Foul on Godman, Liz		2 3:50	*22-15	
			Sub In: Lewis, Diane Out: O'Bryan, Jenny		2 2:57		
			Sub In: Edwards, Heather Out: Godman, Liz		2 2:57		
3		6	Foul on Edwards, Heather		2 2:57	22-17* Grant, Gretchen, 1 & Bonus made both	3-4 75.0% 3-6 50.0%
					2 1:56		
1-4	25.0%	11-21 52.3%	4 ft Lane Turnaround by Edwards, Heather		2 1:51	22-19* Grant, Gretchen, 2 Free Throws made both	5-6 83.3% 5-8 62.5%
4		10	Assist by Francis, Tina		2 1:34	*24-19	

Clay County "Tigerettes" vs Oldham County "Lady Colonels"
1st Half Play by Play

Tip off at 7:30 p.m. on 03/25/88 at State Tourney, Frankfort
Produced by the K.H.S.A.A. Stat Crew with FINRL III**

PAGE : 1

Player	Team	Oldham County	Time	Score	Clay County	Player	Team
Harned, Terri	Godman, Liz	Edwards, Heather, Prather, Charla, Francis, Tina			Carpenter, Ruth, Messer, Michelle, Grant, Gretchen, Feltner, Susan, Jones, Kim		
1-1	100%	1-1 100%	8 ft Right Base Line Jump shot by Godman, Liz	1 7:45	*2-0		
1	1	1	Assist by Harned, Terri				
2-2	100%	2-2 100%	6 ft Lane Jump shot by Godman, Liz	1 7:31	2-2*		
2	2	2	Assist by Harned, Terri	1 6:34	*4-2	Driving Layup by Jones, Kim	1-1 100% 1-1 100%
1-1	100%	3-3 100%	18 ft Right Side Jump shot by Harned, Terri	1 6:01	*6-2		
1	1	3	Assist by Francis, Tina				
1	1	1	Foul on Edwards, Heather	1 4:58			
			Sub In: Lewis, Diane Out: Prather, Charla	1 4:58			
1	2		Foul on Harned, Terri	1 4:58	6-3*	Grant, Gretchen, 1 Free Throw made	1-1 100% 1-1 100%
				1 4:57		Grant, Gretchen, 1 Free Throw missed	1-2 50.0% 1-2 50.0%
				1 4:46			
				1 4:23	6-5*	6 ft Left Base Line Bank by Jones, Kim	2-3 66.6% 2-4 50.0%
				1 3:54	6-7*	Driving Layup by Grant, Gretchen	1-2 50.0% 3-5 60.0%
						Assist by Jones, Kim	1 1
2-2	100%	4-6 66.6%	18 ft Right Base Line Jump shot by Harned, Terri	1 3:29	*8-7		
1	4	4	Assist by Lewis, Diane				
3-4	75.0%	5-8 62.5%	6 ft Left Base Line Jump shot by Godman, Liz	1 3:04	8-9*	Follow Layup by Grant, Gretchen	2-3 66.6% 4-8 50.0%
2	5	5	Assist by Francis, Tina	1 2:34	8-11*	7 ft Left Side Driving by Jones, Kim	3-4 75.0% 5-9 55.5%
				1 2:05	*10-11		
				1 1:51	10-13*	6 ft Left Side Bank by Jones, Kim	4-5 80.0% 6-10 60.0%
				1 1:32		Foul on Grant, Gretchen	1 1
				1 1:32			
2-2	100%	2-2 100%	Sub In: Prather, Charla Out: Francis, Tina	1 1:32			
1	3	3	Sub In: O'Bryan, Jenny Out: Lewis, Diane	1 1:17	*12-13		
			Godman, Liz, 2 Free Throws made both	1 1:17		Feltner, Susan, 2 Free Throws missed both	0-2 00.0% 1-4 25.0%
			Foul on Godman, Liz	1 1:05	*14-13		
3-3	100%	6-9 66.6%	16 ft Right Side Jump shot by Harned, Terri				
1	6	6	Assist by O'Bryan, Jenny	1 0:07	14-15*	7 ft Lane Driving by Jones, Kim	5-6 83.3% 7-12 58.3%



Oldham County				Clay County							
Player				Player							
41 - Harned, Te	5 / 7	71.4%	33 - O'Bryan, J	0 / 3	0.0%	24 - Carpenter,	0 / 2	0.0%			
44 - Godman, Li	3 / 4	75.0%				40 - Messer, Mic	0 / 4	0.0%			
45 - Edwards, He	1 / 4	25.0%				54 - Grant, Gre	2 / 4	50.0%			
11 - Prather, C	2 / 3	66.6%				22 - Feltner, S	0 / 4	0.0%			
31 - Francis, T	0 / 1	0.0%				32 - Jones, Kim	5 / 9	55.5%			
Layups	1-9 Ft	10-15 Ft	Over 15 Ft	3 Pointers	Total	Layups	1-9 Ft	10-15 Ft	Over 15 Ft	3 Pointers	Total
2 / 2	4 / 9	2 / 7	3 / 4		11 / 22	3 / 3	4 / 9	0 / 5	0 / 1	0 / 5	7 / 23
100.0%	44.4%	28.6%	75.0%		50.0%	100.0%	44.4%	0.0%	0.0%	0.0%	30.4%

Oldham County				Clay County							
Player				Player							
41 - Harned, Te	5 / 7	71.4%	33 - O'Bryan, J	0 / 3	0.0%	24 - Carpenter,	0 / 2	0.0%			
44 - Godman, Li	3 / 4	75.0%				40 - Messer, Mic	0 / 4	0.0%			
45 - Edwards, He	1 / 4	25.0%				54 - Grant, Gre	2 / 4	50.0%			
11 - Prather, C	2 / 3	66.6%				22 - Feltner, S	0 / 4	0.0%			
31 - Francis, T	0 / 1	0.0%				32 - Jones, Kim	5 / 9	55.5%			
Layups	1-9 Ft	10-15 Ft	Over 15 Ft	3 Pointers	Total	Layups	1-9 Ft	10-15 Ft	Over 15 Ft	3 Pointers	Total
2 / 2	4 / 9	2 / 7	3 / 4		11 / 22	3 / 3	4 / 9	0 / 5	0 / 1	0 / 5	7 / 23
100.0%	44.4%	28.6%	75.0%		50.0%	100.0%	44.4%	0.0%	0.0%	0.0%	30.4%